

\$6,825,000 - Rr 260 Twp Rd 544, Rural Sturgeon County

MLS® #E4357025

\$6,825,000

0 Bedroom, 0.00 Bathroom,
Land Commercial on 0.00 Acres

Pro North Industrial Park, Rural Sturgeon County, AB

An extension to the existing PRO-NORTH Industrial Park. This 78.30 acre parcel is an excellent opportunity for future subdivision of Medium Industrial lots and or subdivide to an owner-user for larger lots. The parcel has been approved by Sturgeon County for subdivision. it is currently zoned as Medium Industrial un-serviced. There are options for services to each of the subdivide lots. Access is direct via TWP Rd 544 to Highway 2 and Range Road 260 to Highway 37 and Villeneuve Rd Hwy 633. Only 10 minutes from north St. Albert on paved roads, 3 K north of Costco and 4 K west. Go to realtor's website for further information.

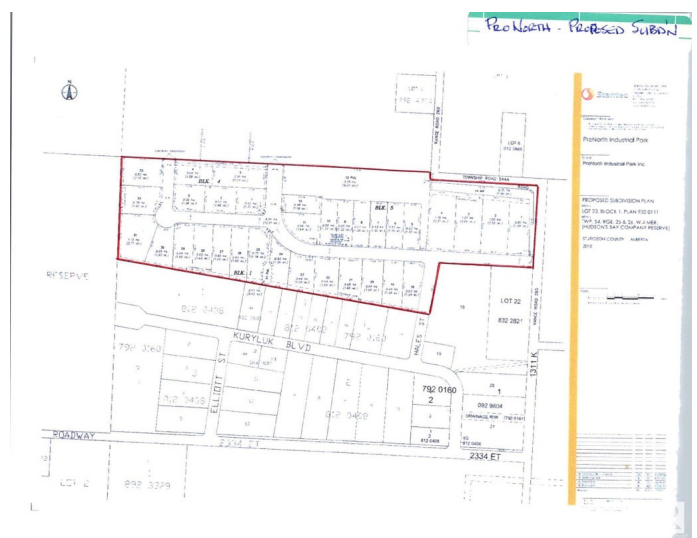
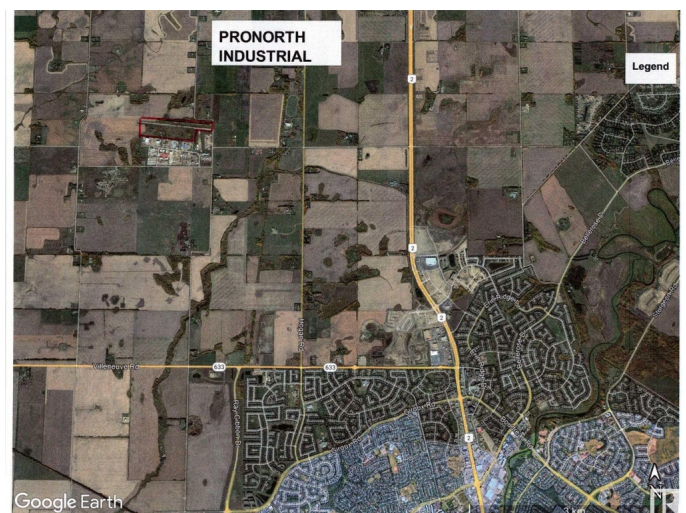
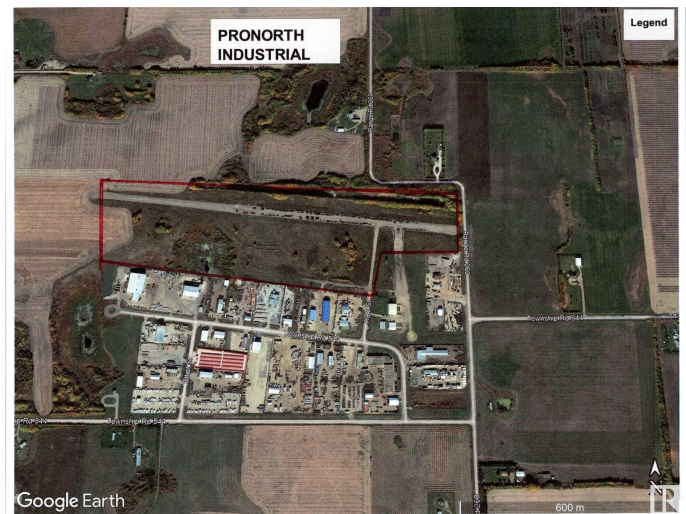
Built in 2000

Essential Information

| | |
|------------|-----------------|
| MLS® # | E4357025 |
| Price | \$6,825,000 |
| Bathrooms | 0.00 |
| Acres | 0.00 |
| Year Built | 2000 |
| Type | Land Commercial |
| Status | Active |

Community Information

Address Rr 260 Twp Rd 544



| | |
|-------------|---------------------------|
| Area | Rural Sturgeon County |
| Subdivision | Pro North Industrial Park |
| City | Rural Sturgeon County |
| County | ALBERTA |
| Province | AB |
| Postal Code | T8T 0B6 |

Exterior

| | |
|--------------|-------------|
| Exterior | See Remarks |
| Construction | See Remarks |

Additional Information

| | |
|----------------|---------------------|
| Date Listed | September 1st, 2023 |
| Days on Market | 603 |
| Zoning | Zone 60 |

DATA IS DEEMED RELIABLE BUT IS NOT GUARANTEED ACCURATE BY THE REALTORS® ASSOCIATION OF EDMONTON. COPYRIGHT 2025 BY THE REALTORS® ASSOCIATION OF EDMONTON. ALL RIGHTS RESERVED. Trademarks are owned or controlled by the Canadian Real Estate Association (CREA) and identify real estate professionals who are members of CREA (REALTOR®, REALTORS®) and/or the quality of services they provide (MLS®, Multiple Listing Service®)

Listing information last updated on April 26th, 2025 at 9:17am MDT