

# \$3,120,000 - Twp 555 R.rd 222, Rural Sturgeon County

MLS® #E4383273

**\$3,120,000**

0 Bedroom, 0.00 Bathroom,  
Land Commercial on 0.00 Acres

None, Rural Sturgeon County, AB

80 Acres of cleared, flat and dry Heavy Industrial land in the Sturgeon Industrial Heartland. Part of a 320 acre offering immediately adjacent to the Cando Rail Terminal expansion. See MLS E4379793 (80 acres) and MLS E4379791 (160 acres). One mile east of Hwy 825.

Built in 2024

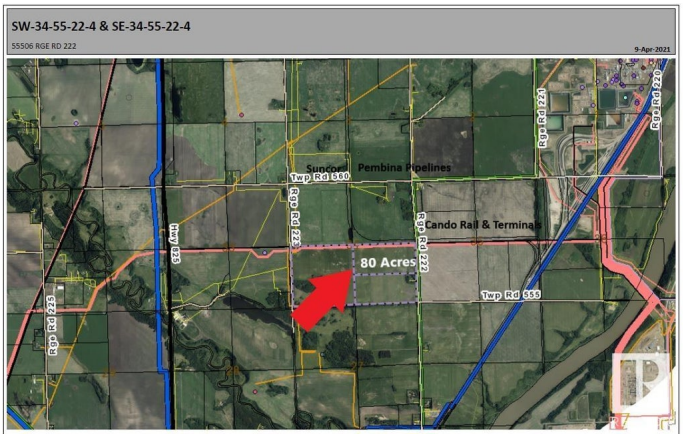
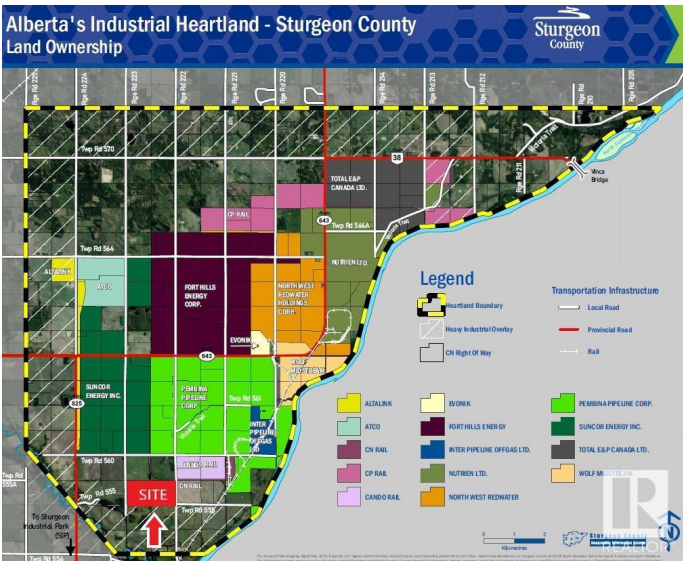
## Essential Information

MLS® #	E4383273
Price	\$3,120,000
Bathrooms	0.00
Acres	0.00
Year Built	2024
Type	Land Commercial
Status	Active

## Community Information

Address	Twp 555 R.rd 222
Area	Rural Sturgeon County
Subdivision	None
City	Rural Sturgeon County
County	ALBERTA
Province	AB
Postal Code	T0A 1N1

## Exterior



Exterior	See Remarks
Construction	See Remarks

**Additional Information**

Date Listed	April 22nd, 2024
Days on Market	369
Zoning	Zone 60

DATA IS DEEMED RELIABLE BUT IS NOT GUARANTEED ACCURATE BY THE REALTORS® ASSOCIATION OF EDMONTON. COPYRIGHT 2025 BY THE REALTORS® ASSOCIATION OF EDMONTON. ALL RIGHTS RESERVED.Trademarks are owned or controlled by the Canadian Real Estate Association (CREA) and identify real estate professionals who are members of CREA (REALTOR®, REALTORS®) and/or the quality of services they provide (MLS®, Multiple Listing Service®)

Listing information last updated on April 26th, 2025 at 2:17pm MDT