

\$392,500 - 10 52111 Range Rd 270, Rural Parkland County

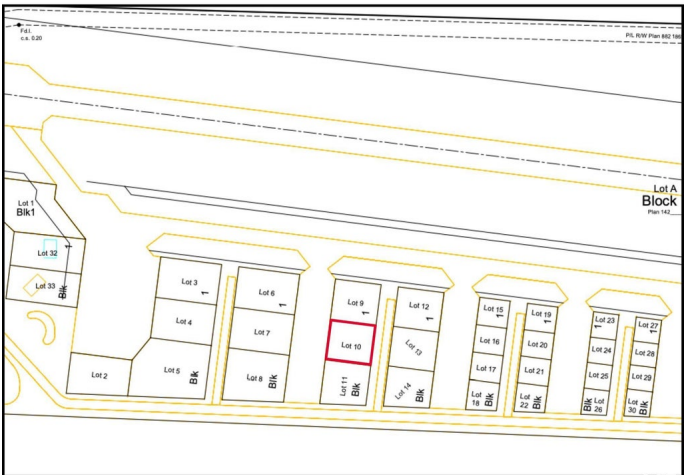
MLS® #E4407991

\$392,500

0 Bedroom, 0.00 Bathroom,
Land Commercial on 0.00 Acres

Sandhills Estates, Rural Parkland County, AB

Unique Opportunity at Edmonton Parkland Executive Airport! Donâ€™t miss out on this 0.45-acre lot located on the North side of the Edmonton Parkland Executive Airport, providing easy access to the runway. Featuring paved taxiways, Natural gas and power to the lot, this property is perfectly suited for the construction of customizable hangars or shops, depending on your project requirements. With AGG zoning, this parcel offers exceptional flexibility for aviation-related businesses or a range of commercial development opportunities. Each lot will require an independent septic and cistern system. This is your chance to secure a prime location within a growing executive airport community!



Essential Information

MLS® #	E4407991
Price	\$392,500
Bathrooms	0.00
Acres	0.00
Type	Land Commercial
Status	Active

Community Information

Address	10 52111 Range Rd 270
Area	Rural Parkland County
Subdivision	Sandhills Estates
City	Rural Parkland County
County	ALBERTA
Province	AB
Postal Code	T7X 3M2

Additional Information

Date Listed	September 26th, 2024
Days on Market	340
Zoning	Zone 90

DATA IS DEEMED RELIABLE BUT IS NOT GUARANTEED ACCURATE BY THE REALTORS® ASSOCIATION OF EDMONTON. COPYRIGHT 2025 BY THE REALTORS® ASSOCIATION OF EDMONTON. ALL RIGHTS RESERVED. Trademarks are owned or controlled by the Canadian Real Estate Association (CREA) and identify real estate professionals who are members of CREA (REALTOR®, REALTORS®) and/or the quality of services they provide (MLS®, Multiple Listing Service®)

Listing information last updated on September 1st, 2025 at 12:02am MDT