

\$458,800 - 21320 94 Avenue, Edmonton

MLS® #E4431348

\$458,800

4 Bedroom, 2.50 Bathroom, 1,212 sqft

Single Family on 0.00 Acres

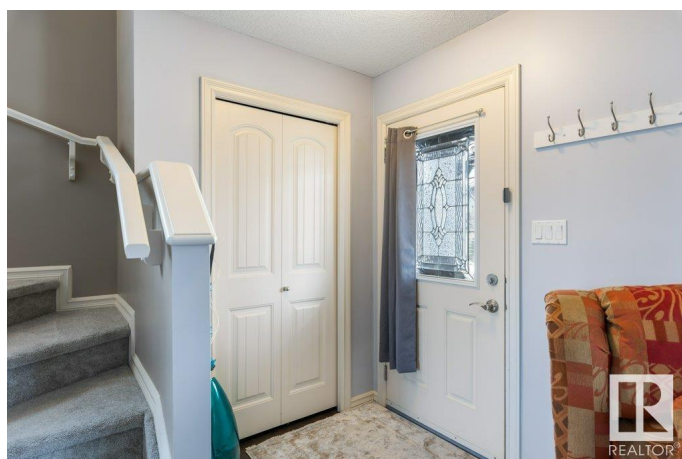
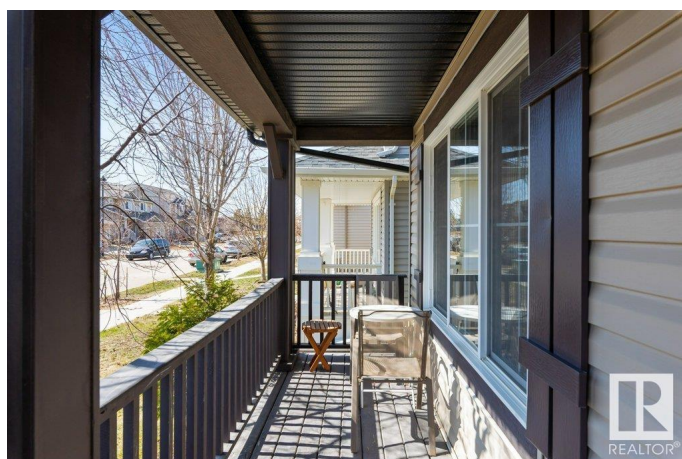
Webber Greens, Edmonton, AB

Fall in love with this fully finished 2-storey beauty in sought-after Webber Greens! Just steps to schools, parks & all amenities—with quick access to the Henday & Yellowhead for effortless commuting. The sunlit main floor shines with hardwood throughout, a stylish kitchen featuring soft-close cabinets, walk-in pantry & handy 2-pce bath. Step outside to your private, low-maintenance backyard oasis with raised garden beds & a double detached garage! Upstairs, enjoy a spacious primary suite with walk-in closet, 2 more generous bedrooms & a 4-pce bath. The basement is a showstopper—boasting a cozy family room, 4th bedroom & spa-like bath with a massive walk-in shower, plus laundry & storage! Upgrades include: tankless hot water, basement soundproofing, new carpet (2020), & sleek updated backsplash. This is the perfect family home—stylish, spacious & move-in ready!

Built in 2012

Essential Information

MLS® #	E4431348
Price	\$458,800
Bedrooms	4
Bathrooms	2.50
Full Baths	2



Half Baths	1
Square Footage	1,212
Acres	0.00
Year Built	2012
Type	Single Family
Sub-Type	Detached Single Family
Style	2 Storey
Status	Active

Community Information

Address	21320 94 Avenue
Area	Edmonton
Subdivision	Webber Greens
City	Edmonton
County	ALBERTA
Province	AB
Postal Code	T5T 4E5

Amenities

Amenities	Deck, Hot Water Tankless
Parking	Double Garage Detached

Interior

Appliances	Dishwasher-Built-In, Dryer, Garage Control, Garage Opener, Hood Fan, Refrigerator, Stove-Electric, Washer, Window Coverings
Heating	Forced Air-1, Natural Gas
Stories	3
Has Basement	Yes
Basement	Full, Finished

Exterior

Exterior	Wood, Vinyl
Exterior Features	Back Lane, Fenced, Landscaped, Park/Reserve, Playground Nearby, Public Transportation, Schools, Shopping Nearby
Roof	Asphalt Shingles
Construction	Wood, Vinyl
Foundation	Concrete Perimeter

School Information

Elementary	Winterburn
Middle	Michael Phair
High	Jasper Place

Additional Information

Date Listed	April 17th, 2025
Days on Market	9
Zoning	Zone 58

DATA IS DEEMED RELIABLE BUT IS NOT GUARANTEED ACCURATE BY THE REALTORS® ASSOCIATION OF EDMONTON. COPYRIGHT 2025 BY THE REALTORS® ASSOCIATION OF EDMONTON. ALL RIGHTS RESERVED. Trademarks are owned or controlled by the Canadian Real Estate Association (CREA) and identify real estate professionals who are members of CREA (REALTOR®, REALTORS®) and/or the quality of services they provide (MLS®, Multiple Listing Service®)

Listing information last updated on April 26th, 2025 at 9:17pm MDT