

\$650,000 - 2003 Christopher, Sherwood Park

MLS® #E4432605

\$650,000

5 Bedroom, 3.50 Bathroom, 2,045 sqft

Single Family on 0.00 Acres

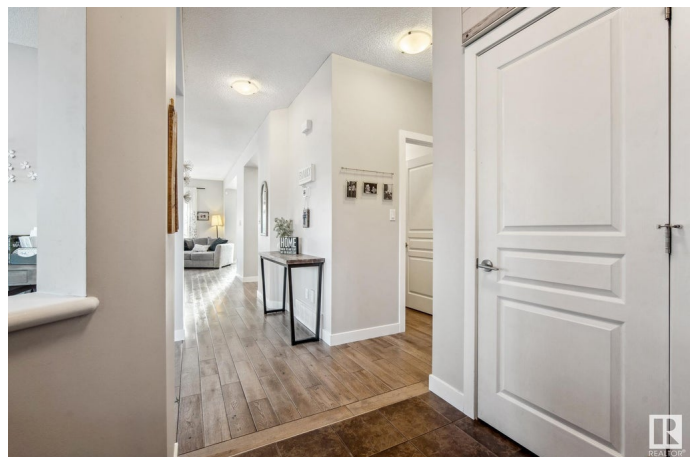
Lakeland Ridge, Sherwood Park, AB

Located in the family-friendly community of Lakeland Ridge, this gorgeous 2 story home offers 2,044 sq ft of well designed living space. The main floor features a bright open-concept living and kitchen area with a cozy gas fireplace. Chefs kitchen has loads of counter space and a walk-through pantry leading to the laundry and mudroom. Finishing the main floor is a 2pc guest bathroom and a versatile den space. Upstairs you'll find four spacious bedrooms, including the primary suite with a generous walk-in closet and ensuite bath. The fully finished basement boasts a large family rec room, 5th bedroom, and 3-piece bathroom. A double attached garage and storage shed provide extra storage. Sunny south facing backyard with a spacious deck - perfect for entertaining. Located close to walking trails, parks, schools, shopping & restaurants.

Built in 2010

Essential Information

MLS® #	E4432605
Price	\$650,000
Bedrooms	5
Bathrooms	3.50
Full Baths	3
Half Baths	1
Square Footage	2,045



Acres	0.00
Year Built	2010
Type	Single Family
Sub-Type	Detached Single Family
Style	2 Storey
Status	Active

Community Information

Address	2003 Christopher
Area	Sherwood Park
Subdivision	Lakeland Ridge
City	Sherwood Park
County	ALBERTA
Province	AB
Postal Code	T8H 0L7

Amenities

Amenities	Air Conditioner, Deck, No Smoking Home, Vinyl Windows
Parking	Double Garage Attached

Interior

Interior Features	ensuite bathroom
Appliances	Air Conditioning-Central, Dishwasher-Built-In, Dryer, Garage Control, Garage Opener, Microwave Hood Fan, Oven-Built-In, Refrigerator, Storage Shed, Washer, Window Coverings
Heating	Forced Air-1, Natural Gas
Fireplace	Yes
Fireplaces	Mantel
Stories	3
Has Basement	Yes
Basement	Full, Finished

Exterior

Exterior	Wood, Brick, Vinyl
Exterior Features	Corner Lot, Fenced, Low Maintenance Landscape, Playground Nearby, Schools, Shopping Nearby
Roof	Asphalt Shingles
Construction	Wood, Brick, Vinyl
Foundation	Concrete Perimeter

Additional Information

Date Listed April 24th, 2025
Days on Market 4
Zoning Zone 25

DATA IS DEEMED RELIABLE BUT IS NOT GUARANTEED ACCURATE BY THE REALTORS® ASSOCIATION OF EDMONTON. COPYRIGHT 2025 BY THE REALTORS® ASSOCIATION OF EDMONTON. ALL RIGHTS RESERVED.Trademarks are owned or controlled by the Canadian Real Estate Association (CREA) and identify real estate professionals who are members of CREA (REALTOR®, REALTORS®) and/or the quality of services they provide (MLS®, Multiple Listing Service®)
Listing information last updated on April 28th, 2025 at 6:17am MDT