

# **\$1,200,000 - 1615 Haswell Court, Edmonton**

MLS® #E4432673

**\$1,200,000**

7 Bedroom, 5.50 Bathroom, 4,105 sqft

Single Family on 0.00 Acres

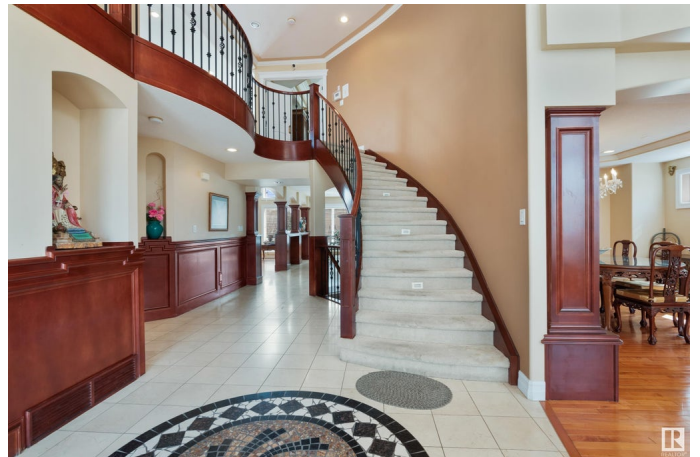
Haddow, Edmonton, AB

Welcome to 1615 Haswell Court NW! This fantastic home has a total of 7 bedrooms and 5 full bathrooms & a half bath. Great floor plan and size! Can be generational home! It has over 6K sq ft of living space, TRIPLE GARAGE + driveway to park 6+ cars., separate entrances to the FULLY FINISHED WALKOUT basement, backing on walking path, easy access to Anthony Henday, minutes to the EIAirport & more! You will be impressed as soon as you walk in the grande foyer with the stairs to the 2nd level. Living room (with cathedral ceiling + floor to ceiling windows ) which is open to the dining room. There is a bedroom & a full bathroom+ laundry area on this main level. A chef's kitchen (plus spice kitchen) has a breakfast nook with access to the deck. Very bright & spacious Family room with built-in shelves & GAS Fireplace complete the main level. Upstairs: Primary bedroom has its big walk-in closet + 5 pc ensuite, 2 bedrooms with a full bath, 4th BR a private veranda + ensuite. 2 more bedrms in the basement.

Built in 2004

## **Essential Information**

MLS® #	E4432673
Price	\$1,200,000



Bedrooms	7
Bathrooms	5.50
Full Baths	5
Half Baths	1
Square Footage	4,105
Acres	0.00
Year Built	2004
Type	Single Family
Sub-Type	Detached Single Family
Style	2 Storey
Status	Active

### Community Information

Address	1615 Haswell Court
Area	Edmonton
Subdivision	Haddow
City	Edmonton
County	ALBERTA
Province	AB
Postal Code	T6R 3C2

### Amenities

Amenities	Walkout Basement
Parking Spaces	10
Parking	Triple Garage Attached

### Interior

Interior Features	ensuite bathroom
Appliances	Dishwasher-Built-In, Dryer, Garage Opener, Oven-Built-In, Stove-Electric, Stove-Gas, Washer, Refrigerators-Two
Heating	Forced Air-2, Natural Gas
Fireplace	Yes
Fireplaces	Mantel
Stories	3
Has Basement	Yes
Basement	Full, Finished

### Exterior

Exterior	Wood, Stucco
----------	--------------

Exterior Features	Park/Reserve, Public Transportation, Schools, Shopping Nearby
Roof	Asphalt Shingles
Construction	Wood, Stucco
Foundation	Concrete Perimeter

**Additional Information**

Date Listed	April 24th, 2025
Days on Market	2
Zoning	Zone 14

DATA IS DEEMED RELIABLE BUT IS NOT GUARANTEED ACCURATE BY THE REALTORS® ASSOCIATION OF EDMONTON. COPYRIGHT 2025 BY THE REALTORS® ASSOCIATION OF EDMONTON. ALL RIGHTS RESERVED.Trademarks are owned or controlled by the Canadian Real Estate Association (CREA) and identify real estate professionals who are members of CREA (REALTOR®, REALTORS®) and/or the quality of services they provide (MLS®, Multiple Listing Service®)

Listing information last updated on April 26th, 2025 at 2:47am MDT